



BCMTA Newsletter

November 2009

Calendar of Events 2009 Summary

11/13 – 3rd General Meeting

11/21 – Student Day Exams

12/13 – Annual Holiday party

[FOR COMPLETE CALEDAR
LISTINGS CLICK HERE](#)

Newsletter Highlights:

Musichthon	2
General Meetings	3
Nov. 13 Meeting Info.	4
Teacher Announcements	5
Students in the news	6
Muscithon Attachments	7



Happy Thanksgiving

Broward County Music Teachers Association

President's Message

November, 2009

Dear Colleagues and Friends,

We had a wonderful turnout for the Dalcroze workshop at our second General Meeting. Those in attendance bounced, clapped, danced, stepped, and laughed together as we explored ways to introduce rhythms and to overcome rhythmic difficulties with our students. Joy Yelin was fantastic as a facilitator and a good time was had by all. Thank you to Jennifer Donelson for planning this exciting and interactive program!



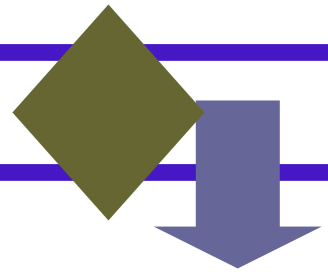
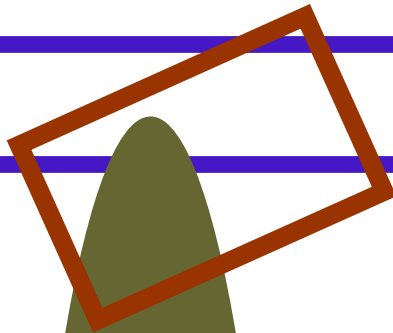
We will look forward to seeing you at our third general meeting, which will be a book study on Friday, November 13th at the Rendezvous Café in Ft. Lauderdale at 11:00 AM. We will be discussing the book, *The Perfect Wrong Note*.

District VI Student Day evaluations are right around the corner on November 21st, followed by our Holiday Party at Dianne Garvin's lovely home. Please make note on your calendars so you don't miss an event and watch for updates to come.

Musically yours,

Mary Beth Purchase





BCMTA Board & Committee Chairs • 2009-20011

Executive Board

- President**
Mary Beth Purchase
- 1st VP, Programs**
Jennifer Donelson
- 2nd VP, Membership**
Peggy Gallagher
- 3rd VP, Student Activities**
Maria Gomez
Sue Colvert
- Treasurer**
Annamarie Cockreham
- Recording Secretary**
Barbara Kaskinen
- Corresponding Secretary**
Barbara Schaap
- Directors**
Wanda Wiranis
Dianne Garvin
Neil MacLaren
- Parliamentarian**
Dianne Garvin

Committee Chairs

- Pro-Tem Newsletter Editor**
Barbara Muze for Nancy Kenney
- Musicthon**
Wanda Wiranis
OPEN
- Student Days**
Sue Colvert
Sandra Greenland
Maria Gomez
Dianne Garvin
- Honors Recital**
Matthew Johnson (N)
Annamarie Cockreham (S)
Barbara Schaap (S)
- Historian**
OPEN
- Hospitality Chairman**
OPEN
- E-mail Correspondence**
Caroline Morgan
- Summer Camp Scholarships**
Peggy Gallagher
- Composition Chairman**
Marie Budinsky-Maher
- Competitions Chairman**
Rosalie Gregory
- Yearbook Editor**
Peggy Gallagher
Sheri Garlock
- Referral Service**
Nadine Cherna
- Audio & Video Librarian**
Karola Zehme
- Greenspan & FSMTA President's Community Service Award**
Joanna Greenspan-Medalie
- Publicity**
Barbara Muze
- Website Editor**
Barbara Muze
- Scholarship**
Joanna Greenspan
- Scheduling**
Dianne Garvin

Please contact BCMTA President, Mary Beth Purchase, if you would like to join a committee or serve on the board!



MUSICTHON 2010 January 22, 23, 24

Galleria Mall
Fort Lauderdale

It's that time again! Please start making plans to involve as many students as possible in this fun event that puts BCMTA in the public eye. It is our only annual fundraising event, proceeds of which help support the many programs offered by our organization.

Teacher letters, sponsor letters and sign up sheets are attached to the end of this newsletter.

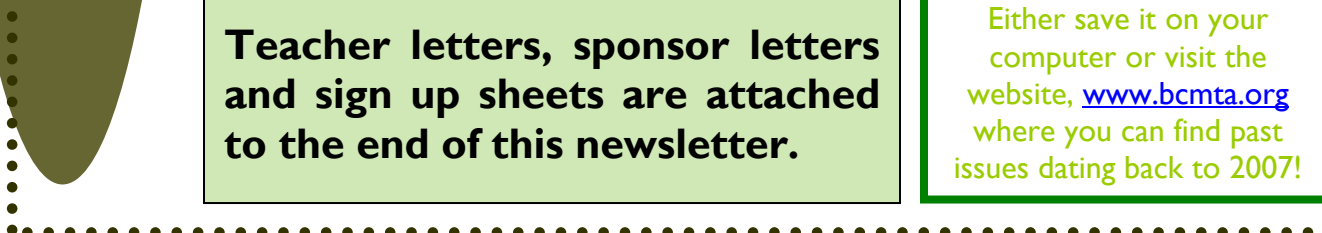
HOLIDAY PARTY



Sunday, December 13
at the home of
Dianne Garvin

GO GREEN!

Please do not print out this interactive Newsletter unless you really need to. Either save it on your computer or visit the website, www.bcmta.org where you can find past issues dating back to 2007!



2009/2010 GENERAL MEETING SCHEDULE

November 13, 2009, 11:00 a.m. – 3RD General Meeting. Café Book Study: *The Perfect Wrong Note: Learning to Trust Your Musical Self* by William Westney.

LOCATION: Rendezvous Café (1576 E. Oakland Park Blvd.)
SEE PAGE 4 FOR DETAILS & STUDY QUESTIONS

January 15, 2010 – 4TH General Meeting. **Dr. Jennifer Donelson** - Reading Between the Lines; Or, How to Play More than Just the Right Note at the Right Time - Developing Expressive Playing and Interpretive Skills in Beginning Students.

April 9, 2010 - 5TH General Meeting. **Judith Burganger** – Performance Practice in the Studio - Tips for teaching and discussing ornaments and other historically-informed techniques to keyboard students

These meetings are a great way to meet you fellow BCMTA members, share ideas regarding our profession and socialize with your peers. They are FREE and an important benefit of membership.

Mark your calendars NOW and plan to attend!



SPECIAL OFFER TO BCMTA TEACHERS, STUDENTS & PARENTS
The Miami International Piano Festival opens its 2010 Season on
SATURDAY, NOVEMBER 28, 2009 – 8:00 P.M.
With a special concert featuring legendary violinist
Ida Haendel and Festival discovery, Misha Dacic, pianist.
Broward Center for the Performing Arts, Amaturio Theater

Tickets for BCMTA Teachers, their Students and their Students' Parents

On Sale For Only \$5
(limited first-come-first-served offer)

Please reserve your tickets by sending an e-mail to barbara@miamipianofest.com
No Later Than Tuesday, November 24

Reserved tickets can be purchased & picked up at the Broward Center Box Office
prior to the concert.

More information at: http://www.miamipianofest.com/calendar/special_11_28_09.html

2010 MTNA National Conference
CLICK LINK for details
<http://members.mtna.org/Conference2010/index.html>

Join Members of the BCMTA for a Book Study!

(Sorry for the small print – for easier viewing, simply enlarge your screen)

We will be discussing William Westney's *The Perfect Wrong Note: Learning to Trust Your Musical Self* at the Rendezvous Café at 10:30 a.m. on Friday, November 13th. A list of study questions, and links to a map of the café and to buy the book are given below. Even if you're unable to finish the whole book, plan to come for what will undoubtedly be a fruitful conversation and enjoyable time with colleagues! Questions? Contact Jennifer Donelson at: jd1120@nova.edu. A map to the Café: <http://www.mapquest.com/maps?city=Oakland+Park&state=FL&address=1576+E.+Oakland+Park+Blvd>

A link to buy the book:

http://www.amazon.com/Perfect-Wrong-Note-Learning-Musical/dp/1574671456/sr=8-1/qid=1163058575/ref=sr_1_1/104-5021192-1853547?ie=UTF8&s=books

Chapter 1

1. Westney talks about teaching discipline through music study. Do you think discipline is an important result of music study? How high a priority do you place on discipline? Is this priority the same for all students?
2. On page 25, Westney discusses the role of intuition in learning. How do you incorporate a child's intuition into music study?

Chapter 2

1. Westney says (on page 35) that rhythmic vitality is the "most enlivening musical quality of all." What role does this vitality perform in your own playing? Where, how, and when did you learn to play with this vitality?
2. What role do stereotypes of music lessons play in your studio? Do you have to communicate with parents of current or potential students about negative stereotypes? What role do you think they play in the economic vitality of our profession in general? (pp. 35-36)
3. Have you ever had one of the types of teachers Westney discusses on page 38? What did you learn from that teacher?
4. On pages 40-41, Matthey offers thoughts on respecting the individuality of students. What do you do in your studio to encourage independent decision-making and interpretation? How does one successfully balance demonstration of sounds with forcing a student to play exactly as we wish?

Chapter 3

1. How often do you experience the freedom to make an honest mistake in your own practice? Have you gotten better with time at forgiving yourself and learning from mistakes, or is the sense of guilt greater because one "really should know better by now?"
2. Do we often enable the "suppression and denial" of student mistakes in lessons? (pages 68-69) What are some teaching strategies for avoiding this enabling?
3. Are you or are any of your musician friends perfectionists? How does the perfectionist approach Westney's discussion of chaos on pages 71.

Chapter 4

1. How can one teach students to practice with the method Westney outlines in this chapter? How does the development of a student's ability to self-evaluate affect the ability to practice?
2. "Luckily, the practice room is a workshop, not a concert hall." (p. 82) If this is always true, how does one make a transition to playing in a concert hall?

Chapter 5

1. Have you had a breakthrough moment with a student using those concepts described in this chapter? What did you do to set up this moment for the student?
2. What are the key components of a breakthrough moment? Knowing these components, can you think of a way to set up a breakthrough moment using a concept other than those described here?
3. "Any idea can be creative and beautiful when it's pure, that is, at the moment it comes to us unbidden." (p. 115) If that's the case, how does Westney suggest keeping these ideas pure so that we can repeat them in performance – or, do we always need to come up with new ideas?

Chapter 6

1. What kinds of musical skills and concepts are particularly prone to "good-student syndrome?" How can we help students to physically embed these concepts or overcome perfectionism in these areas?

Chapter 7

1. What are some activities you've planned that encourage the positive types of performing experiences that Westney describes?

Chapter 8

1. Do we as teachers really encourage students to step away from "the goal...in order to eventually reach it"? (p. 155) Do we reinforce formative steps toward the goal with positive affirmations of the progress of the student? Or does our attitude toward gradual progress seem to convey the sense that "that was good, but it still wasn't perfect so I'm not happy with your playing"?
2. P. 157 – "Don't fight it or make compensations while you play; just explore, be fascinated, and learn everything you can about the exact nature of that piano's ugliness." Have you ever taken this approach to a bad instrument in performance? What were the results?
3. Pp. 158-160 – How can we help students experience the positive effects of competitions without taking away the fun that comes when learning to play without the fear of being judged negatively?
4. Have you ever used atonal music to bring out the spontaneous musician in a student? What were some pieces that you used? (p. 165)
5. Do you think it is important for teachers to continue to perform if they expect their students to do so? Why or why not?

Chapter 9

1. How do you brainstorm with your students?
2. What positive role can mimicking play in the music lesson?

Chapter 10

1. What lessons can we take away from Westney's book for teaching adults – a category of students particularly prone to the pitfalls he discusses?

Chapter 11

1. Have you ever had an "aha!" moment where you were able to apply something you learned through studying music to a life experience or vice versa?



Dick and Wanda Wiranis celebrated their 50th wedding anniversary on Oct 23rd, with family and friends at the Bonaventure Country Club.



Dr. Irena Kofman has moved to a new home in Parkland, her new address is:
12365 NW 81st Street, Parkland, FL 33076

Her phone numbers remain the same (home 954-796-0567; cell. 954-755-3456), but her new email address is ikofman@comcast.net. You can also reach her at ikofman@fau.edu

Her previous home is available for rent--a 4 bedroom 2.5 bathroom beautiful two-story lake view house in superb condition, built in 1991 and recently renovated with a new marble kitchen, stainless steel appliances, and air-conditioning unit. It is zoned for the best public schools in Broward County (Park Trails Elementary, Riverglades Elementary, Westglades Middle, and Stoneman Douglas High School) and across the street from Terramar Park (50.1 acres, largest park in Parkland). Community amenities include a pool, fitness center, sauna, fishing dock, and security protected gate. \$2500 per month, please contact Dr. Kofman for viewings.

BCMTA members were saddened to learn of the passing of **Barry Weinberg**, a long-time member and significant contributor to the organization and the music community. He was an inspiration to many and will be missed.

We would like to create a memorial page for Barry on our BCMTA website. Please send any thoughts, memories, and/or anecdotes you would like to share to bmuze@bellsouth.net for inclusion on the webpage.

Advertisement

Beautiful Handmade Adjustable Piano Footrest.

**Personalized with your own name plaque!
Put your young pianist in the correct position from the start.**



Five adjustable levels. No more dangling, kicking legs. Every piano student whose feet do not touch the floor should own this! These are handmade, excellent quality hard-wood birch. Why do we make them? Our son started piano lessons and we looked everywhere for a footrest that was of solid construction and looked nice with our piano. What we found was a pine footrest for twice the cost that barely fit his feet! We set to task hand crafting something sturdy yet beautiful that would last generations. And best of all—they can be personalized with your name!

**MADE BY HAND OF BIRCH AND OAK HARDWOODS
COMES IN 5 DIFFERENT SHADES OF STAIN:
MAHOGANY, EBONY, PINE, NATURAL, WALNUT.
\$90 includes personalization. Pickup in Davie, Florida.
Please add \$10 if you would like this shipped.**

Please contact me for more information!

grahamharvey@comcast.net 954-600-6858



Member of
MTNA & FSMTA

Broward County Music
Teachers Association

Pro-Tem Newsletter
Editor
Barbara Muze

E-mail:
bmuze@bellsouth.net

For Sale

*Classified Ads, Business Cards,
and Larger Ads are all welcome
in the BCMTA Newsletter!*

*This publication reaches over
100 teachers & musicians by
mailing list and is available
online at BCMTA.org.*

Please contact Barbara Muze at
bmuze@bellsouth.net
for additional information.
Thank you!

Advertising Rates:

*BCMTA Member Prices
(Non-members add \$10)*

*\$15 – Classified or
Business Card*

\$20 – 1/4 Page

\$25 – 1/2 Page

\$30 – Full Page

- ALL ADS RUN FOR 3 ISSUES •
- PLEASE MAIL CHECKS TO:
BARBARA MUZE
2030 NW 33RD COURT
OAKLAND PARK, FL 33309

TEACHER/STUDENT NEWS

Liam Andrew Nutt, 9 year old grandson of member Roxanne Stevenson, was awarded 2nd Place (\$500) in the Opera Memphis Mozart piano Competition in conjunction with the upcoming presentation of Cossi von Tutti; an performed on Radio Station WKNO to help promote Opera Memphis. Liam was also 1st Place winner in the Tennessee Music Teachers' Association State Concerto Competition (Junior Division) held at Vanderbilt University in Nashville. Liam is a student of Dr. Judith Fairchild of Memphis University.

Dr. Rita Hutcherson Memorial Scholarship Fund

A scholarship fund has begun in the memory of Dr. Hutcherson. Please mail donations to BCMTA Treasurer, Annamarie Cockreham, 4231 SW 54th Avenue Davie, FL 33314 Phone:954-327-0979

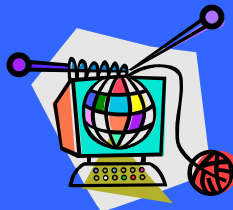
Checks are payable
to BCMTA.

Thank you.

Our Website is UP AND RUNNING

Check

www.BCMTA.org
Please make sure your
teacher listings are
correct.



The website is a "work in progress." Please forward any corrections/suggestions to Barbara Muze.

A ♪ from Newsletter Editor...

Next Deadline: January 4, 2010

Our goal for the newsletter is to send each issue out before the 15th of the month. The Deadline for submissions will be announced around the 1st of the month.

Teacher news, event information, yearbook updates, student news, & advertisements are all welcome! Advertising checks are payable to BCMTA & can be sent to Barbara Muze: bmuze@bellsouth.net

Not all important announcements may fit this schedule. If you have something that needs to reach BCMTA members, please e-mail Mary Beth Purchase. Announcements will then be distributed by E-mail Correspondent, Carolyn Morgan.

REMEMBER TO "GO GREEN"

Only print e-mails and electronic newsletters when necessary.

MUSICTHON 2010

November 2009

Dear Teachers:

It is time to enter your students in our annual fundraiser, **Musicthon**. This year's proceeds will benefit BCMTA activities and Patrons of Exceptional Artists – the non-profit organization that presents the Miami International Piano Festival and supports the careers of up-and-coming-artists. Grant funding for arts organizations has been cut significantly and our support will help bring great performances to the Broward Center in March 2010 to which all BCMTA teachers, students and students' parents are invited to attend for only \$5 per ticket. For more information about this organization and concert series schedule, please log on to www.miamipianofest.com

Musicthon will be held on Friday, Saturday and Sunday, January 22, 23, and 24, 2010 at **The Galleria Mall**, 2414 E. Sunrise Blvd in Fort Lauderdale. To register for a time, please contact Wanda Wiranis at 954-587-1967 please call in the morning please or after 8:00 pm. Each teacher will be allowed a half-hour slot. Please put as many students as possible in your time frame, as the more participants, the more we stand to make. You may request more time, which will be given out if available. Tell Wanda how many of your students will play so we can order prizes. **PLEASE NOTE:** Each student is required to collect \$15.00 to play in the event. All participating students will receive a special prize from BCMTA for playing. **Let's get these pledge forms out before the holidays so that extended family can support our students' efforts.**

Teachers must emcee their own students, and volunteer 1 hour at the desk. Due to higher security, the mall management has asked that **no cash be brought to the event**. Teachers may bring checks that students have collected. **All checks should be made out to BCMTA**. Teachers should collect all cash and write that amount in one check **made out to BCMTA**, to be brought on the day of **Musicthon**. **All checks are to be collected PRIOR to Musicthon and brought in a sealed envelope.**

T-SHIRTS FOR PARTICIPATING STUDENTS AND TEACHERS:

Each child who participates in Musicthon 2010 will receive a commemorative t-shirt. In order to order the appropriate number and sizes of t-shirts for all participating students, please submit a list of students and the quantity needed of the following sizes (including one for each teacher):

Youth S, M, L, and Adult S, M, L, XL.

*Please e-mail a list of your students with their corresponding t-shirt sizes (including a teacher size) to Sue Colvert at jwcsr@aol.com by **JANUARY 1st!!!** T-shirts will be packed with the teacher's free shirt and their list of students for pick-up at Musicthon.*

There will be two prizes this year for the teacher and student bringing in the most money, so get the word out to your students and let's have a great **Musicthon!**

Musically yours,

Wanda Wiranis
Musicthon Chair

MUSICTHON 2010

Dear Sponsors:

It is time to prepare for the Broward County Music Teacher Association's annual fundraiser, **Musicthon**. This year's proceeds will benefit Patrons of Exceptional Artists, Inc. and BCMTA student scholarships.

Musicthon will be Friday, Saturday, and Sunday, January 22, 23, and 24, 2010 at **The Galleria Mall**, 2414 E. Sunrise Blvd in Fort Lauderdale. Our local teachers will be presenting their students in half-hour performances. Situated in a focal point of the mall, many passers-by will enjoy their music and learn about BCMTA and a non-profit organization that presents some of the world's best pianists to South Florida audiences. As the presenter of the Miami International Piano Festival, this organization provides professional guidance, educational opportunities and career support to deserving artists. The organization seeks to provide cultural opportunities for children and offers deeply discounted tickets to BCMTA teachers, students and students' parents to attend all concerts. Please contribute what you can to our cause as we not only raise funds, but encourage our students to take part in helping charitable organizations.

For more information about Patrons of Exceptional Artists and the Miami International Piano Festival, please log on to www.miamipianofest.com

We hope to see you at the Galleria Mall.

Thank you for your support.

Musically yours,

Mary Beth Purchase, BCMTA President
Wanda Wiranis, Musicthon Chair

